

### Community housing availability

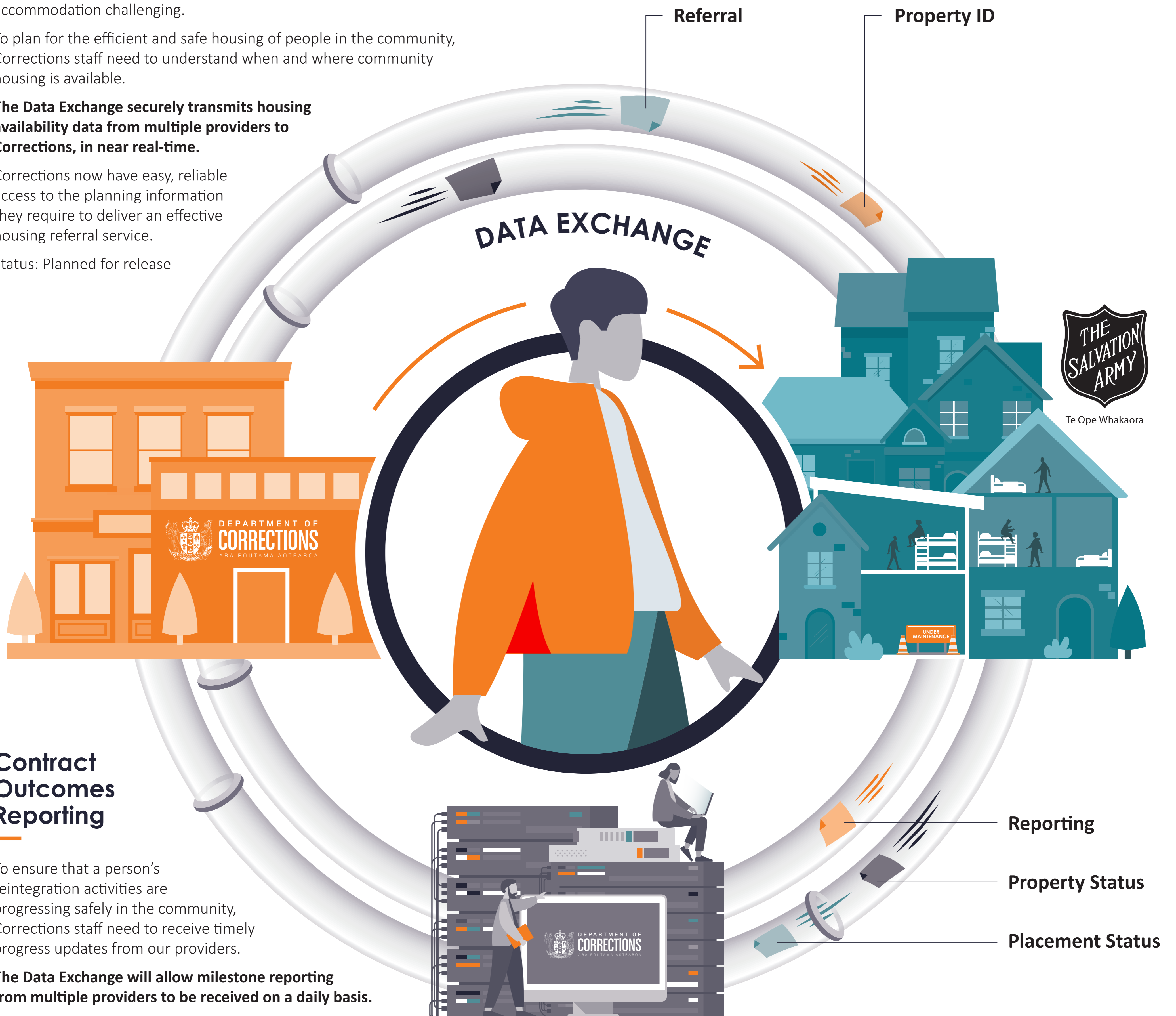
We know that access to stable and suitable accommodation improves health, employment and education outcomes and reduces the likelihood of re-offending. The current housing market has, however, made accessing accommodation challenging.

To plan for the efficient and safe housing of people in the community, Corrections staff need to understand when and where community housing is available.

**The Data Exchange securely transmits housing availability data from multiple providers to Corrections, in near real-time.**

Corrections now have easy, reliable access to the planning information they require to deliver an effective housing referral service.

Status: Planned for release



### Contract Outcomes Reporting

To ensure that a person's reintegration activities are progressing safely in the community, Corrections staff need to receive timely progress updates from our providers.

**The Data Exchange will allow milestone reporting from multiple providers to be received on a daily basis.**

Corrections will have the ability to receive daily progress updates for people receiving reintegration support in the community. Providers will know that their progress information will be able to be reconciled against their invoices each month.

Status: In test

The Department of Corrections creates lasting change by breaking the cycle of re-offending.

This role is a complex one that operates at the end of the criminal justice system pipeline and includes:

- maintaining safe and secure custodial facilities for around 10,000 people
- electronically monitoring defendants and high risk people in the community
- providing rehabilitation and reintegration services
- running community work projects
- providing support to registered victims
- providing administrative services to the New Zealand Parole Board

The majority of people in prison return to the community. By providing offenders with an environment and support to meet their rehabilitative needs, we can empower them to turn their lives around. This keeps us all safe.

Corrections' ability to share and utilise information from a variety of service partners plays an important role in improving business operations and security, and client service delivery. A growing portfolio of applications demonstrates how the Data Exchange is increasingly meeting Corrections' needs.