

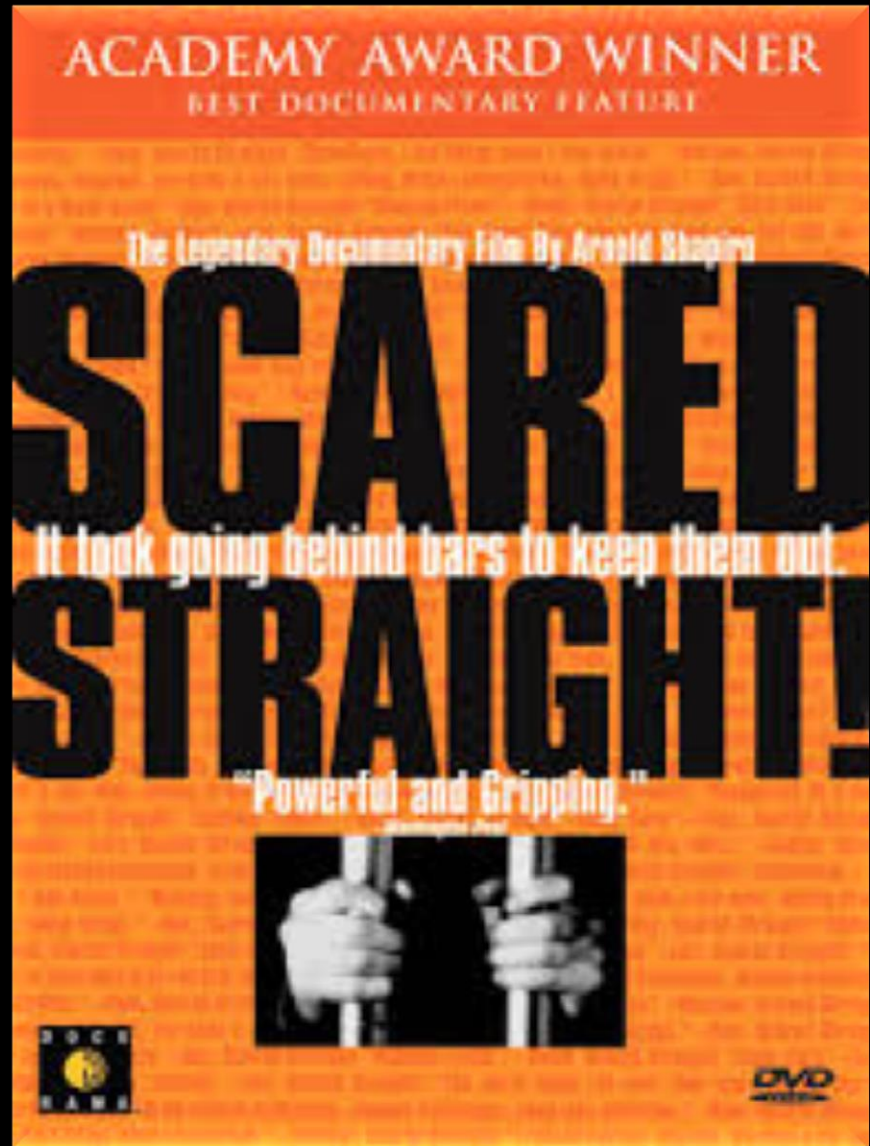
Applying the investment approach: from evaluation to implementation

Marc de Boer & Daniel Lensen

Do social services help
improve people's lives ?

**SCARED
STRAIGHT**





Scared Straight, 1978

Appealing logic

Compelling stories

But

Always ask

What if?



Criminal offending

More

Less

- Evaluations
- Individual
 - Combined

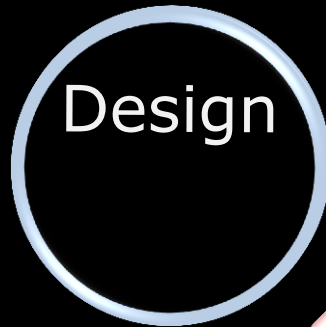




Beyond Scared Straight, A+E Networks, 2011

Training Opportunities

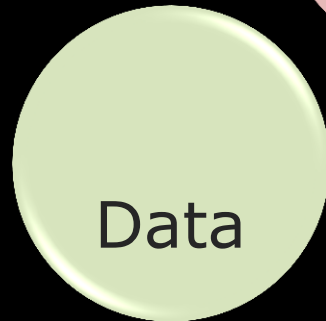
1992



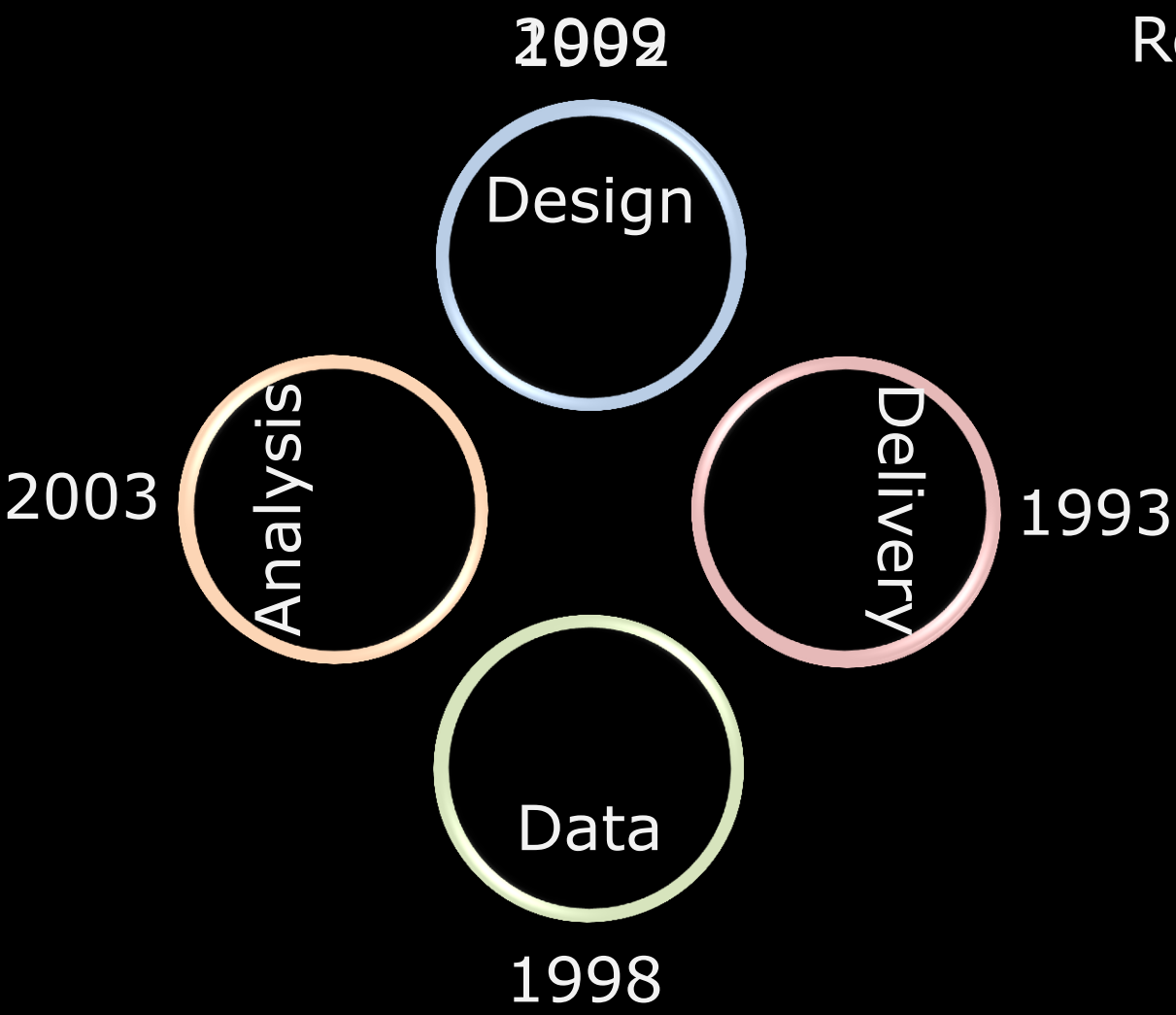
Young unemployed
with no qualifications



1993 Up to 32,000
participants each
year

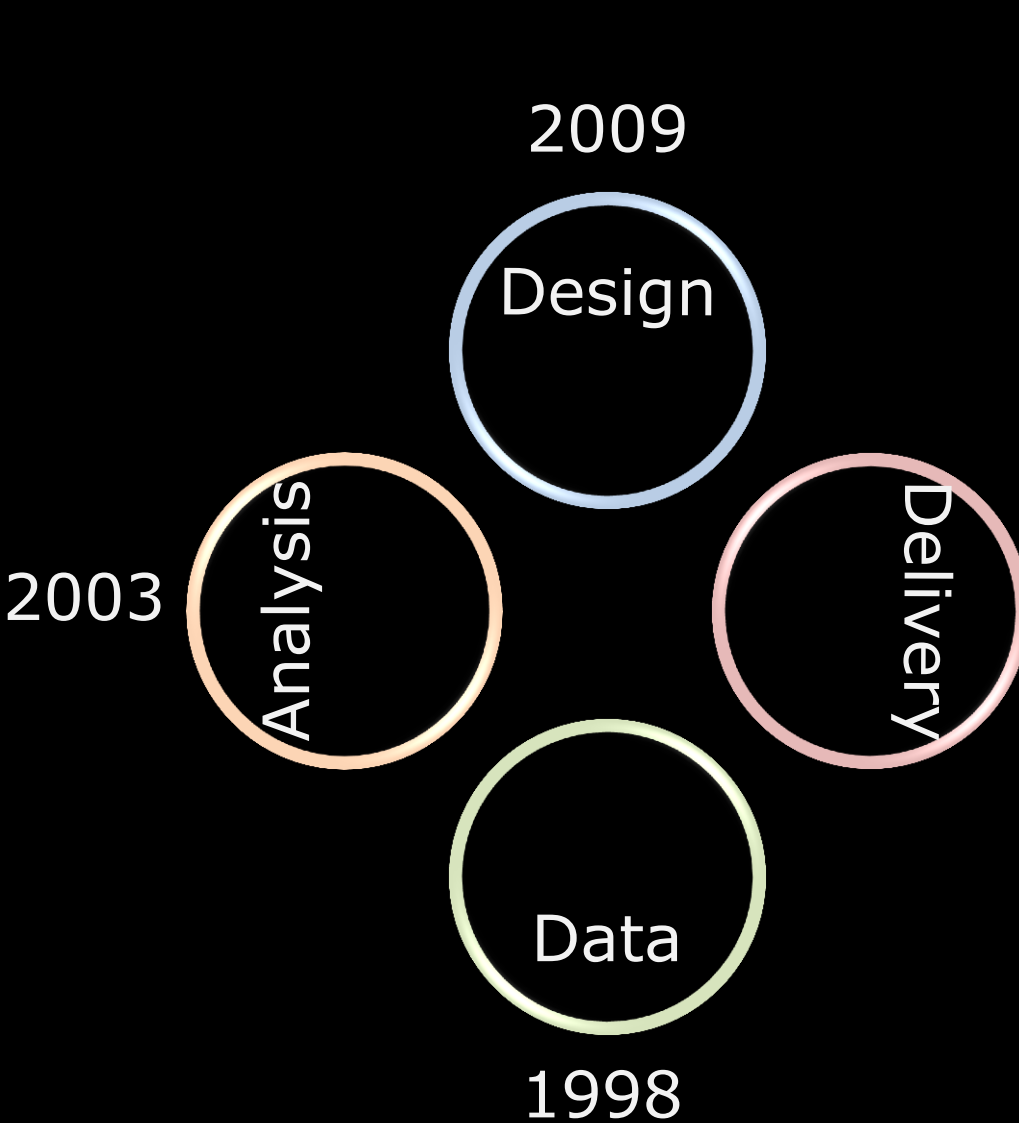


1998



Review of Training Opportunities

Negative impact



Training Opportunities
Review of Training
~~Opportunities~~
Investment
Over \$1 billion

Affected
250,000+ people

Helpful
No, maybe harmful

Learning Loop
17 years

Training Opportunities

Investment
Over \$1 billion

Affected
250,000+ people

Helpful
No, maybe harmful

Learning Loop
17 years

2009

Design

Delivery

1993

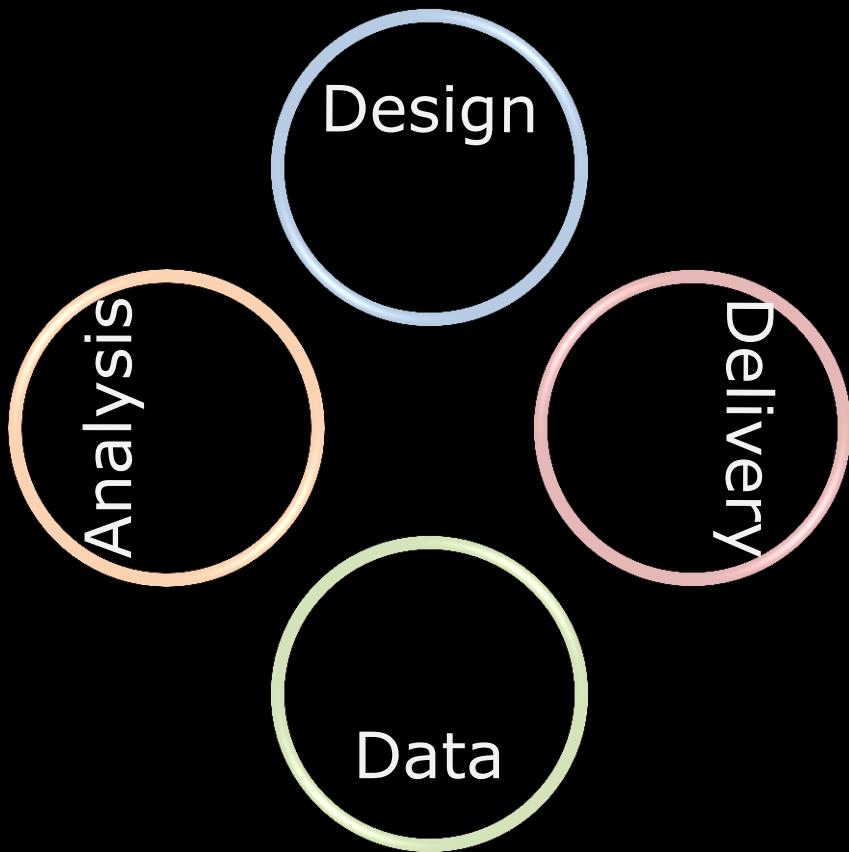
Data

1998

Analysis

2003





Investment
Approach



Integration

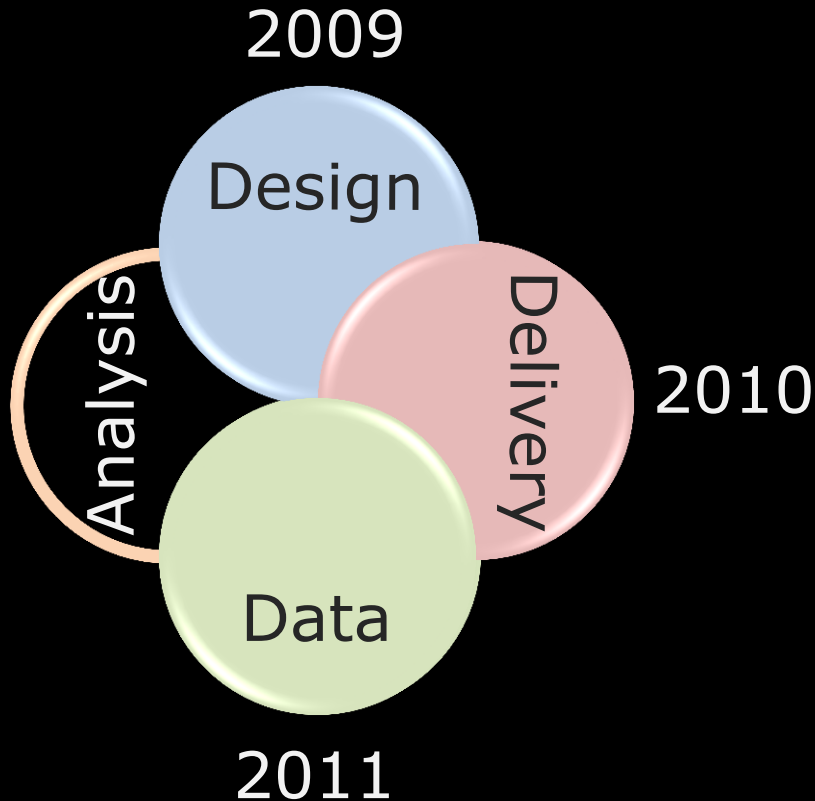


Partnership

Training Opportunities

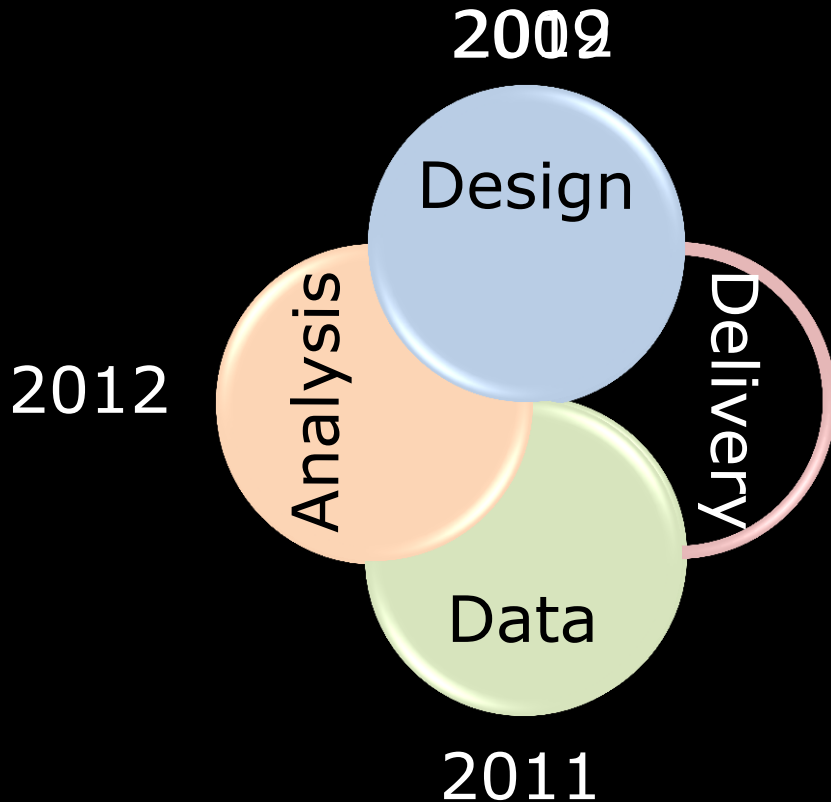
Training for Work

Foundation Focused Training



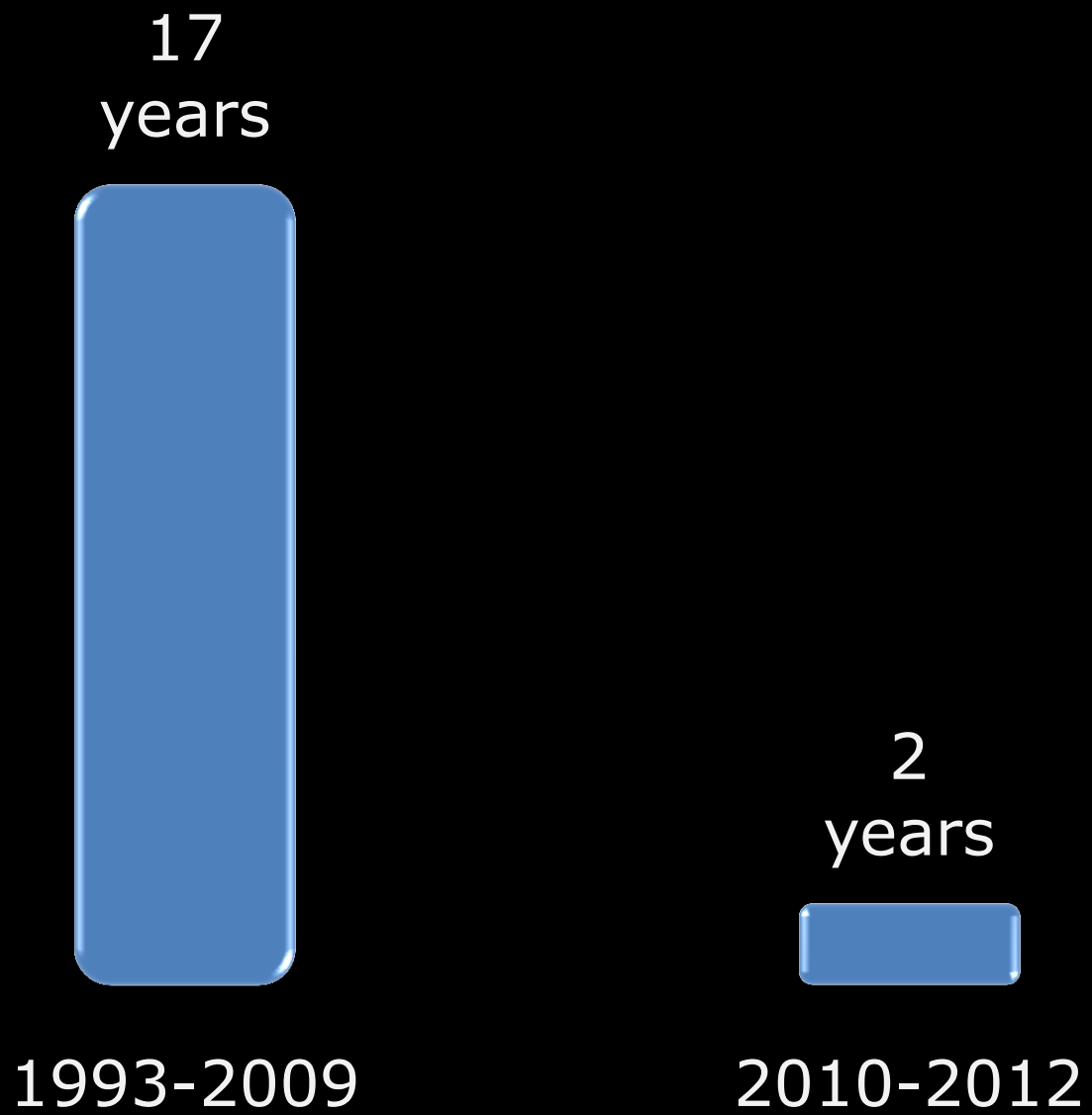
Statistical risk profiling

Foundation Focused Training
funding stopped



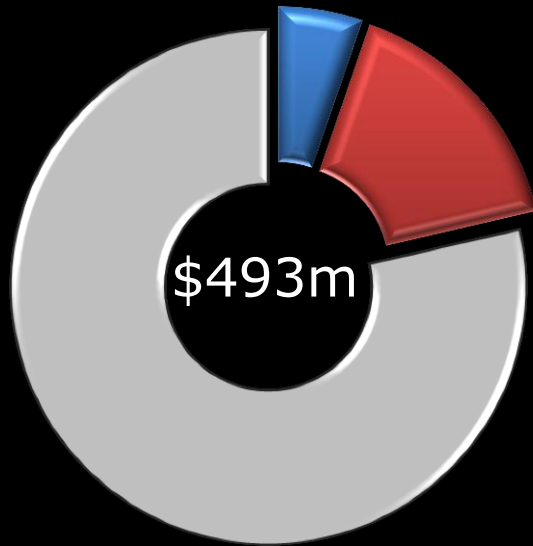
Training for Work
Showing promise

Foundation Focused Training
Same as Training
Opportunities

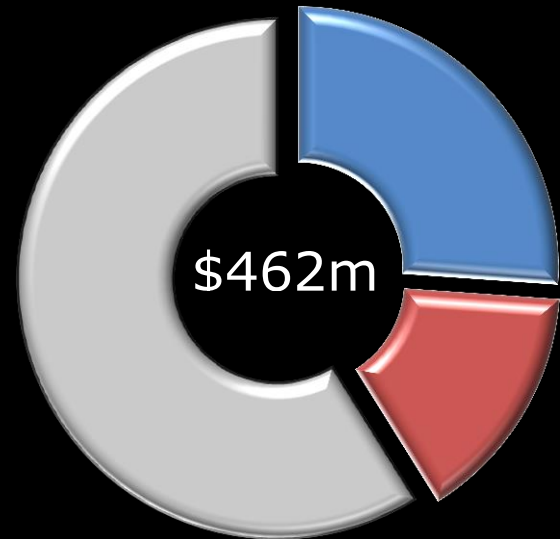


Employment assistance

2010/2011



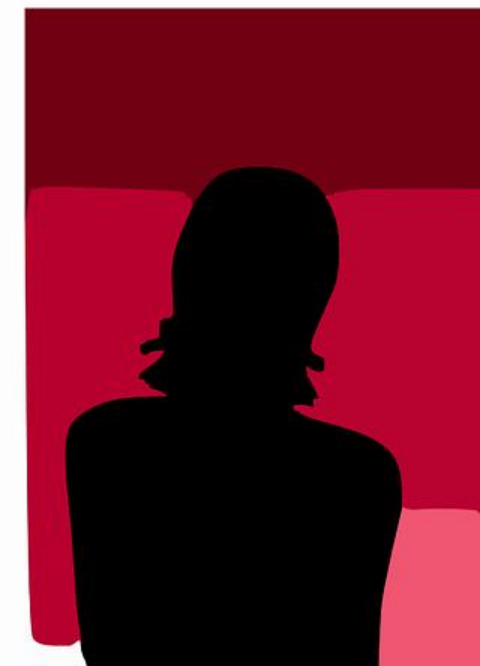
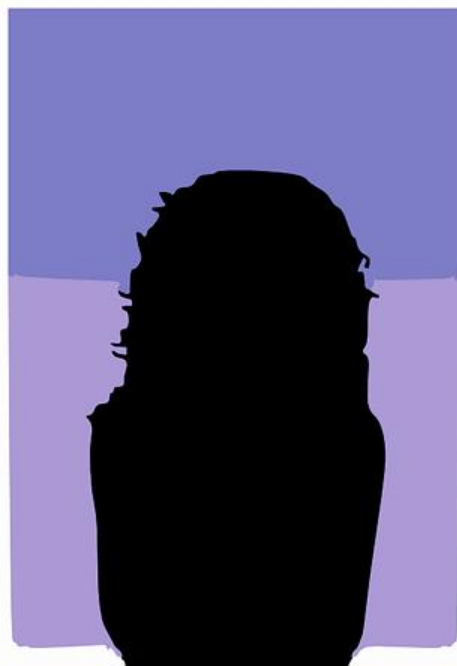
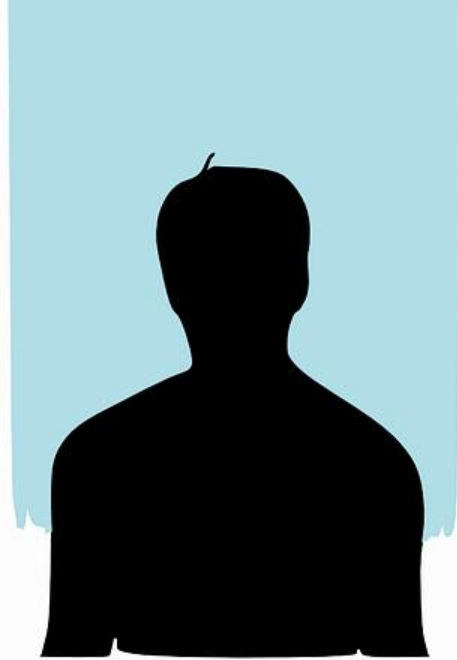
2014/2015



Total spend \$493m

Not assessed  Not Effective  Effective 







\$300K -

\$200K -

\$100K -



\$300K -



\$200K -



\$100K -



\$300K -



\$200K -



\$100K -



\$300K -

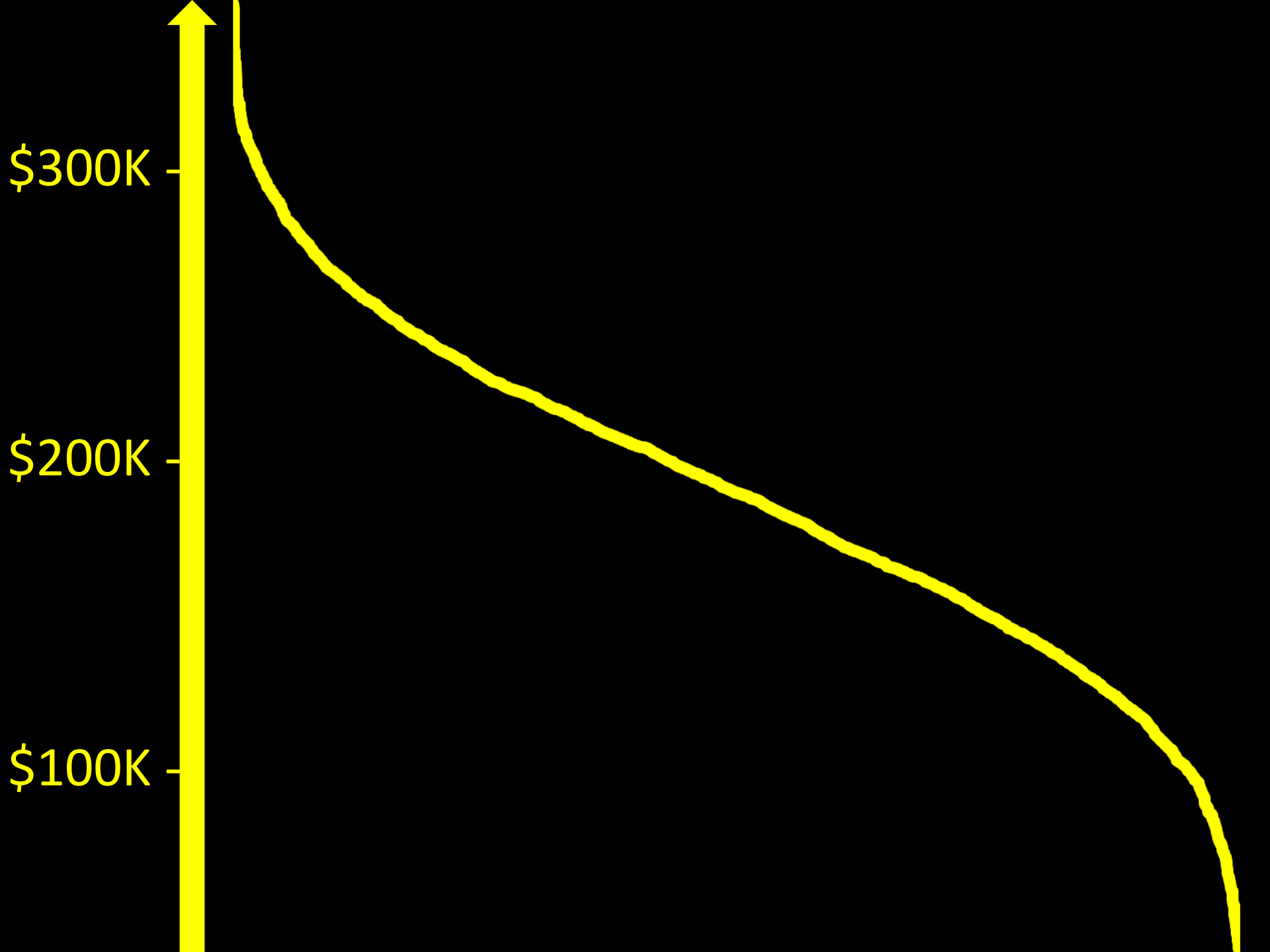


\$200K -



\$100K -







A photograph of a water treatment facility with several large concrete basins. The basins are surrounded by a yellow and black striped safety fence. In the background, there are hills and a clear blue sky. Two orange text boxes are overlaid on the image. The top box contains the text "Who?" followed by a white checkmark. The bottom box contains the text "How?" followed by a white checkmark.

Who? ✓

How? ✓

A photograph of a wind farm in a green field under a blue sky. Several white wind turbines are visible, with one in the foreground on the left and others scattered across the landscape. The sky is clear and blue, and the grass is vibrant green.

Who?

How?

What?

