

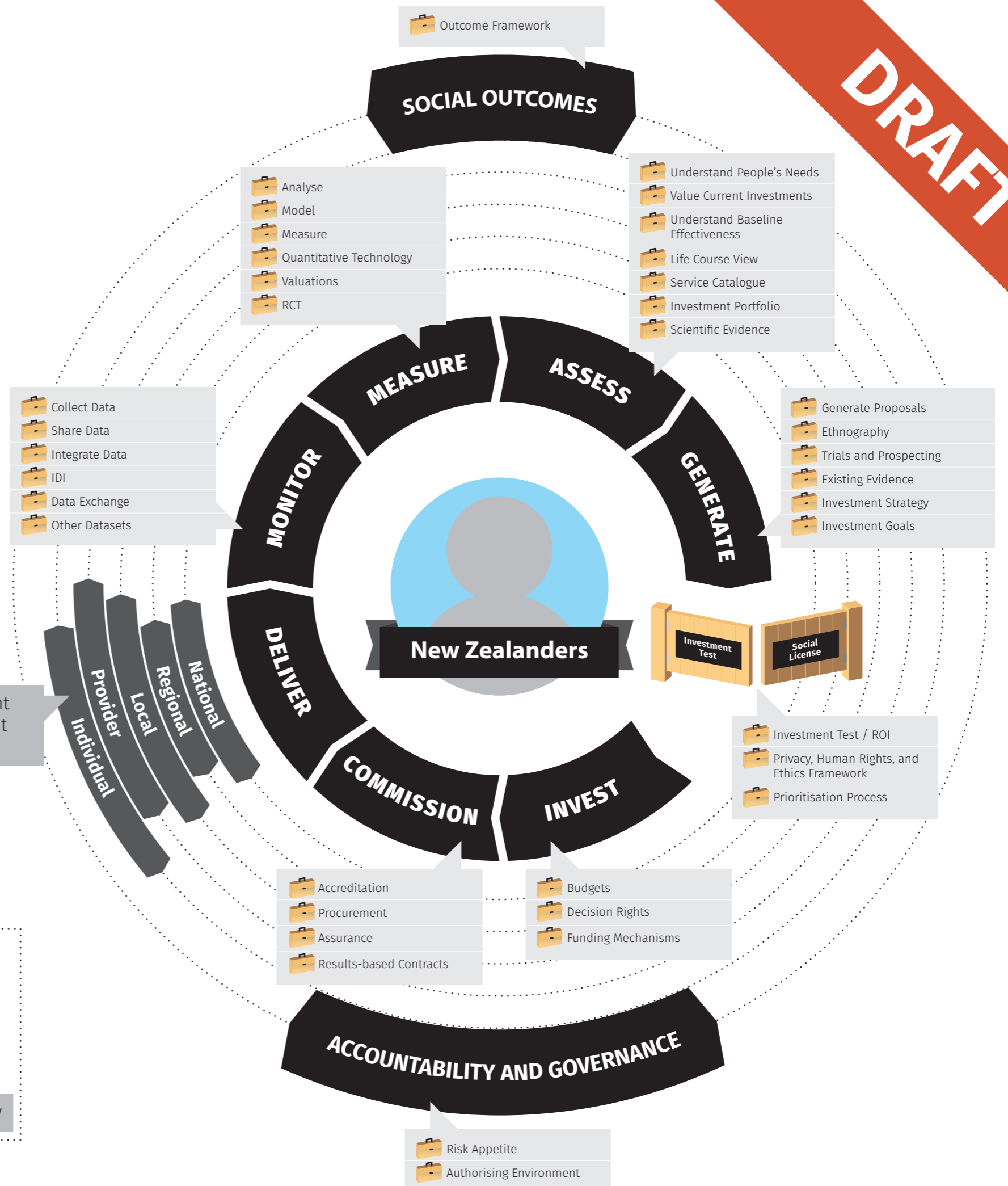
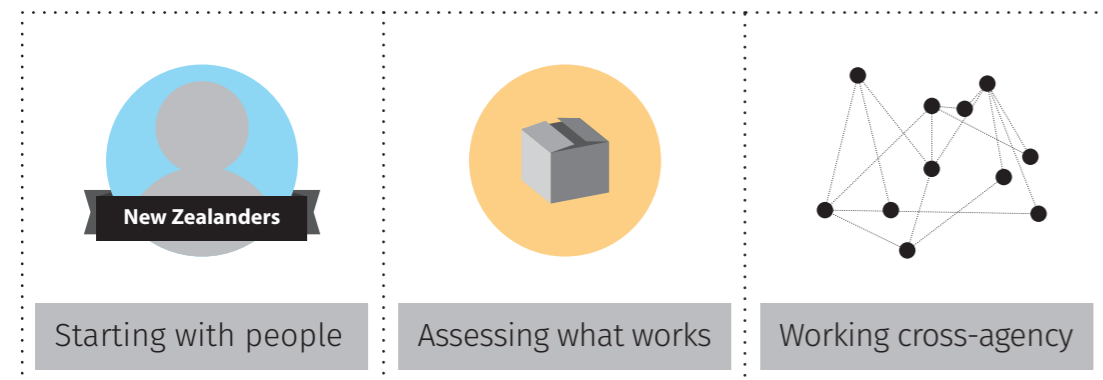
New Zealand's Social Investment Framework

Social Investment is about **improving the lives of New Zealanders by applying rigorous and evidence-based investment practices to social services**. People are at the centre of social investment, from understanding their life courses and needs through to front line delivery, looking across agency boundaries. The goal is the best possible social outcomes, not just a fiscal focus.

It's called **investment** because it's deciding to put in resources upfront but expecting results over time, and then measuring to see if it does. A relentless cycle of investing in new ideas alongside what's already proven keeps the system learning. Tools and analytical methods for analysing data and evidence are the engine room for social investment.

We've all got a part to play and need to act collectively – government agencies, providers, NGOs, iwi, partners, and New Zealanders.

Social investment can be applied at many levels

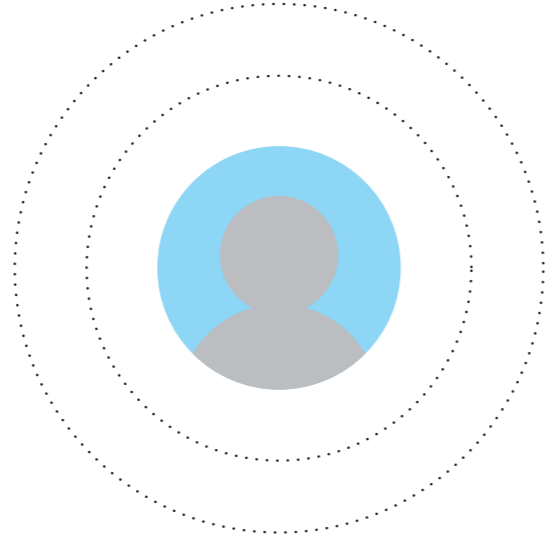


Why Social Investment?



Better lives and better books for New Zealand

What's different about Social Investment?



It's client-centred...

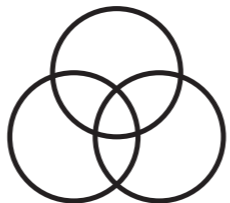
...lifecourse-based...



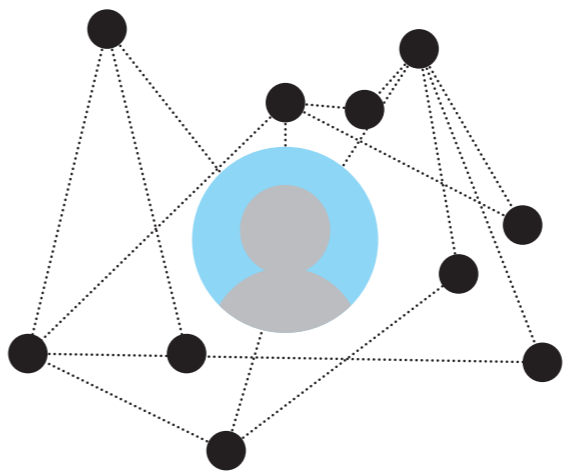
ROI-based



Partnering



Who's involved in Social Investment?



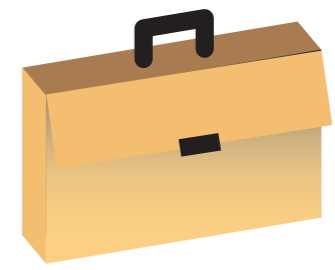
We all are — agencies, providers, partners, New Zealanders

How do we do Social Investment?



By consistently using this simple framework...

...and developing social investment maturity through building capability



DRAFT